

***drive***

**DeVilbiss<sup>®</sup>**  
HEALTHCARE



**Boost Adjustable Transfer Aid**  
**Instruction Manual**

**Users with visual, reading or cognitive disabilities should seek advice from a professional care provider for an appropriate format. If this is not viable, users should contact their provider or Drive DeVilbiss Healthcare Ltd.**

## **Introduction**

The Boost Adjustable Transfer Aid provides a safe and easy solution for a carer wishing to transfer a client. This Transfer Aid is very manoeuvrable and light to use.

The Boost Adjustable Transfer Aid enables users to participate in transfers. This product is ideal for transferring users from room to room, increasing the user's independence.

For those users who can raise from a seated position to a standing position, the Boost Adjustable Transfer Aid is ideal. The carer will rotate the seat pads and the user then stands on the footplate provided. The carer will then lower the seat pads and the user can now sit back, have their legs supported by the knee pads and hold onto the horizontal bar in front of them, making them feel secure. The 4 wheels, (2 of which are braked), enable this aid to be manoeuvred easily from room to room. The narrow width enables the carer to manoeuvre easily through standard doorways.

The Transfer Aid can be wheeled directly up to a toilet, with wheels positioned either side of the WC, offering the user more dignity. To sit down, the above process is reversed.

Note: The Boost Adjustable Transfer Aid has adjustable width legs, enabling the Transfer Aid to be positioned around wider riser recliner armchairs.

## **Intended Purpose**

To provide means of transfer from a seated position to a standing position for individuals with a degree of mobility.

## **Intended User**

Any individual who may have difficulty in sitting or standing and who has a weight of less than 200kg.

## **Indications**

To assist with the sit/stand function of an individual as defined in the "intended user" section.

## **Contra-Indications**

- Users with only one arm/hand
  - User exceeds maximum patient weight
- Other contraindications may be relevant which are specific to the individual and/or environment of use.

## **Environment of use**

The Boost Adjustable Transfer Aid is designed to be used indoors, on an even surface.

## **Safety Precautions**

**Moving and handling instructions should only be given by your healthcare professional.**

- Always wear appropriate footwear when operating the Boost Adjustable Transfer Aid.
- The user should not be left unattended whilst occupying the Boost Adjustable Transfer Aid.
- The user should not lean out of the Boost Adjustable Transfer Aid's footprint.
- Do not exceed the weight capacity of 200kg
- The castor brakes should always be applied, except when the user is being propelled in the Boost Adjustable Transfer Aid.
- The Boost Adjustable Transfer Aid may not be suitable for all users. A risk assessment should be carried out prior to use. The user must be able to bear weight.
- If used with a wheelchair, then the wheelchair brakes should be applied and the leg rests removed, prior to operation.
- Do not tilt or lever the device during use. All four castor wheels should be in contact with the ground at all times.
- The unit is designed for indoor use and should only be used on a level surface.

## **Symbol Definitions**



Maximum User Mass



Medical Device



## **Kneepad Height Options**

The kneepad has two height positions available. The transfer aid is supplied with the kneepad set in the high position. To use the low setting, follow the instructions below:

Remove the handwheels, by turning them anticlockwise. Remove the 4 plastic spacers. Turn the kneepad through 180° and then reposition between the frame. Fix the kneepad in place, using the long handwheels and thin spacers at the bottom, and the short handwheels and the thick spacers at the top. Turn the handwheels clockwise to tighten.

## **Kneepad Fixing Options**

The kneepad is secured with handwheels, which allow for tool-free adjustment of the height of the kneepad. (see image below).



If a fixed position of the kneepad height is required, then the handwheels can be replaced with the supplied buttonhead bolts, following the instructions below:

Remove the handwheels, by turning them anticlockwise. Ensure that the kneepad and spacers remain in position between the frame uprights.

Secure the lower part of the kneepad using two M8 x 60 buttonhead screws.

Secure the upper part of the kneepad using two M8 x 40 buttonhead screws.

Tighten the screws using the 5mm hex key.



## **General Operation – Transferring to the Boost**

1. Position the Boost close to the user requiring transportation.
2. Spread the legs on the Boost to give greater stability. Do this by pressing down on the right hand pedal. (Press down on the left hand pedal to close the legs).



3. Apply the brakes on the rear castors, by pressing down on the locking tab.



4. Ensure that the seat pads are in the raised position.
5. The user's feet should be positioned on the footplate. The user should then grab the handrail. Using the assistance from the handrail, the user should now be able to stand up and push the front of their lower legs against the knee pad.
6. Once the user is fully standing, the seat pads should be lowered so that the user can perch on them. Once the user is secure, release the castor brakes by pushing up on the locking tab. The Boost can then be moved using the push handle.

## **General Operation – Transferring from the Boost**

1. Position the Boost close to the seat or bed.
2. Ensure that the legs are in the spread position, with the right hand pedal down.
3. Apply the brakes on the rear castors by pressing down on the locking tab.
4. Ask the user to stand up, using the handrail for assistance. When the user is stable, the seat pads can be lifted up.
5. The user can now slowly lower themselves into the seat, using the handrail for assistance. The carer should hold the Boost by the push handles during this operation.
6. The user should now remove their feet from the footplate and the carer can release the castor brakes. The Boost can now be wheeled away for storage.

## **Using the Boost with a Chair**

The Boost can be used to aid a user to get up out of a chair, commode, toilet, or wheelchair. If used with a wheelchair, then the wheelchair brakes should be applied and the leg rests removed, prior to operation.

1. Position the user so that they are facing the Boost with their feet on the floor.
2. Spread the legs on the boost, lift up the seat pads and then approach the chair. Get the user to place their feet on the footplate and then apply the castor brakes.
3. The user should then grab the handrail with both hands and use this to assist them with standing up.
4. Once the user is fully standing, the carer should flip down the seat pads so that the user can then perch on the pads.
5. The carer can then release the brakes and propel the Boost, including the user, to their destination.

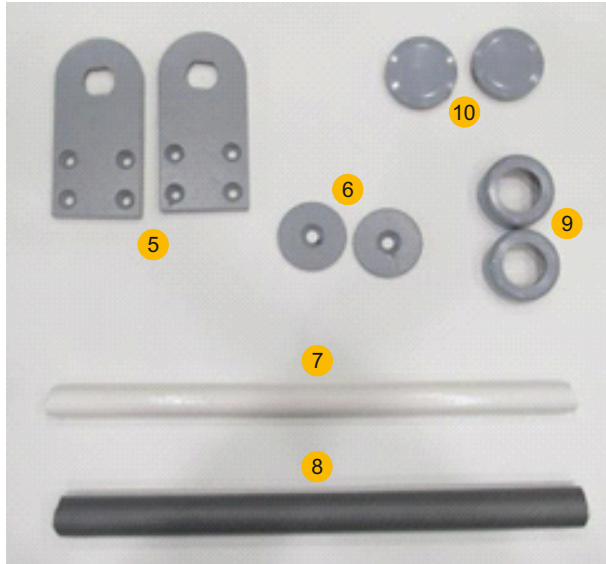
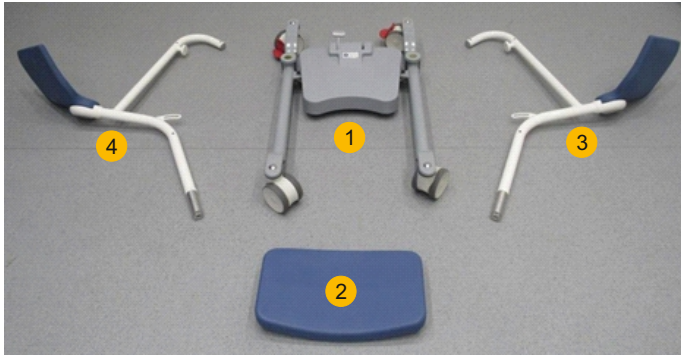
## **Compatible Slings**

Please visit [www.drivedevilbiss.co.uk/our-products/moving-handling/turner-transfer-aids/boost-adjustable-transfer-aid](http://www.drivedevilbiss.co.uk/our-products/moving-handling/turner-transfer-aids/boost-adjustable-transfer-aid), for the latest sling compatibility matrix.

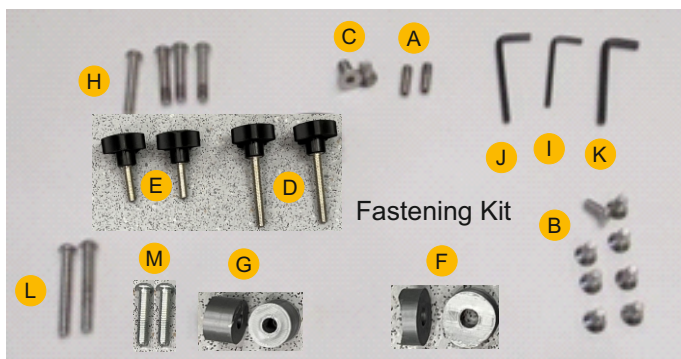
Transfer belts are available from other manufacturer's, but it is the carer / user's responsibility to ensure they are compatible. Always carry out a risk assessment.



## Parts Description



1. Base assembly (1pc)
2. Kneepad (1pc)
3. RHS upright assembly (1pc)
4. LHS upright assembly (1pc)
5. LHS / RHS Base plates
6. Base disc (2pcs)
7. Carer handle (1pc)
8. Patent handle - grey foam (1pc)
9. Upright cover (2pcs)
10. Pivot cover (2pcs)



- A. M8 x 25 Grub screw (2pcs) - pre-fitted to base assembly
- B. M8 x 20 CSK screw (8pcs)
- C. M10 x 20 CSK screw (2pcs)
- D. Handwheel (long) (2pcs)
- E. Handwheel (short) (2pcs)
- F. Nylon spacer - thin (2pcs)
- G. Nylon spacer - thick (2pcs)
- H. M8 x 45 Buttonhead screw (4pcs)
- I. 4mm Hex key
- J. 5mm Hex key
- K. 6mm Hex key
- L. M8 x 60 Buttonhead screw (2pcs)
- M. M8 x 40 Buttonhead screw (2pcs)

## To assemble this product you will need:

Hex keys (supplied) and scissors or knife, to remove the packaging.

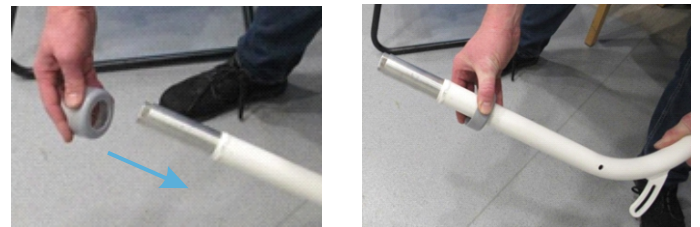
Assembly time 30 - 45 minutes, 2 persons.

## Assembly Procedure

1. Carefully unpack the parts and remove all packaging.



2. Slide the upright covers (9) onto the tubing of the RHS and LHS upright assemblies (3) and (4).



3. Insert RHS and LHS upright assemblies (3) & (4) into the base assembly (1).

Check that the seat pads fold inwards before proceeding.

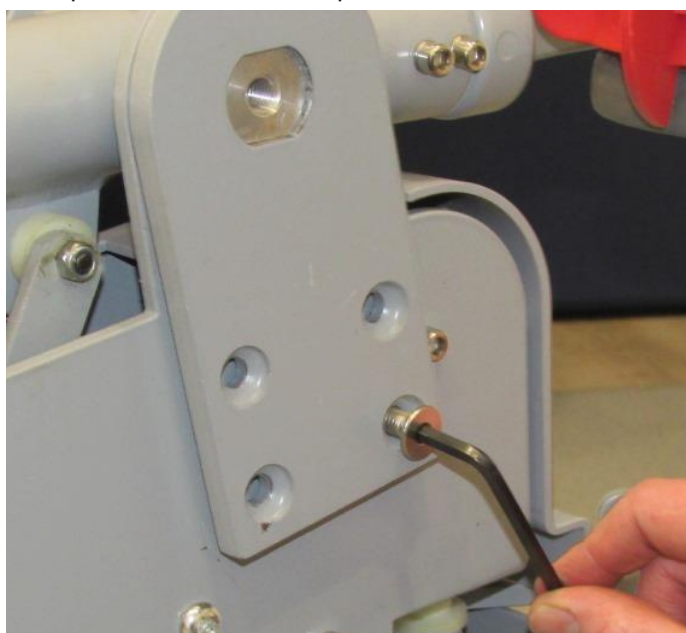




- Secure the location of the uprights by tightening the 2x grub screw (A), using the 4mm hex key (I). Slide the covers (9) down the frame so that they cover the grub screws.

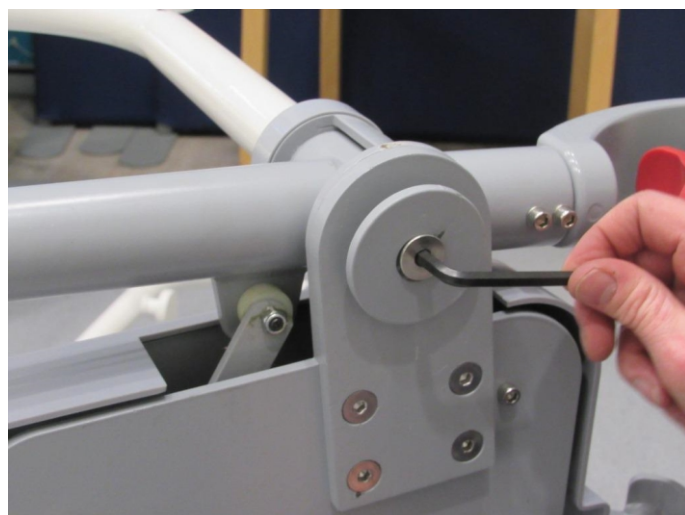


- Access the underside of the base assembly (1).
- Position the RHS base plate. Install with 4 of the M8 x 20 CSK screws (B), using the 5mm hex key (J). Repeat for the LHS base plate.



Note: Due to tolerances, this may require some manipulation of the upright assemblies. It is advisable to attach all 4 screws loosely and only begin tightening the screws once all 4 screws are in position.

- Install the base disc (6) on the RHS using an M10 x 20 CSK screw (C) and the 6mm hex key (K). Repeat for the LHS. When completed, return the transfer aid to the upright position.



## 8. Kneepad Assembly Options

The kneepad has two height positions. To use the high setting, position the kneepad so that the mounting holes on the sides of the kneepad are towards the bottom. To use the low setting, position the kneepad so that the mounting holes on the sides of the kneepad are towards the top.

For tool-free height adjustment of the kneepad, use the handwheels provided. Secure the lower part of the kneepad (2) into position using the two long handwheels (D) and the thin nylon spacers (F). Secure the upper part of the kneepad (2) into position using the two short handwheels (E) and the thick nylon spacers (G).

Alternatively, use the buttonhead screws provided (see page 3 for details).

- Fix the patient handle (8) into position using two M8 x 45 buttonhead screws (H) and the 5mm hex key (I). Note: Only fix in position, do not tighten the screws yet.



10. Secure the carer handle (7) into position using two M8 x 45 buttonhead screws (H) and the 5mm hex key (I).  
Note: Only fix into position - do not tighten the screws yet.



11. Now tighten up all the screws and fasteners, on both sides of the transfer aid, that were left loose in the previous steps.
12. Install the pivot covers (10) by pushing them into position, on both sides of the frame.



## **Specification**

Overall Length	950mm
Overall Width	650mm
Overall Height	1040mm
Knee Pad (W x H)	420 x 250mm
Patient Handle (to floor)	980mm
Carer Handle	940mm
Legs Inner Width	420 - 760mm
Seat Pad	310 x 310mm
Seat Height (from floor)	620 - 720mm
Footplate (D x W x H)	340 x 400 x 100mm
Castor Diameter	100mm
Under Bed Clearance	140mm
Maximum User Mass	200kg
Product Weight	34kg

## **Recycling and Disposal**

The cardboard, steel and plastic components are to be separated and disposed of following the local recycling policy as these can be recovered and recycled.

## **Service Life**

The expected service life of the device is 5 years.

## **Warranty**

The Boost Adjustable Transfer Aid comes with a one year manufacturer's warranty to cover design and manufacturing defects.

This does not include accidental damage, damage as a result of misuse and/or wear and tear.

Please contact Drive DeVilbiss Healthcare for full warranty conditions.

This does not affect your statutory rights.

Any serious incident that has occurred in relation to the device should be reported to the manufacturer and the MHRA or competent authority of your Member State. Please quote the product serial code on all correspondence.



Drive DeVilbiss Healthcare Ltd.  
Sidhil Business Park, Holmfield, Halifax,  
West Yorkshire, HX2 9TN, Great Britain

Drive DeVilbiss Sidhil Ltd.  
4 Trench Road, Mallusk, Newtownabbey  
BT36 4TY, Northern Ireland

Tel: +44 (0) 845 0600 333  
Email: [info@drivedevilbiss.co.uk](mailto:info@drivedevilbiss.co.uk)  
[www.drivedevilbiss.co.uk](http://www.drivedevilbiss.co.uk)

Drive DeVilbiss Healthcare Ltd. provide these instructions for use



Yingkou Henyi Flow Control Inc.  
Xilanqi, Hongqi Town, Bayuquan District,  
Yingkou City, Liaoning Province, CN



Sungo Europe B.V.  
Fascinatio Boulevard 522, Unit 1.7,  
2909VA Capelle aan den IJssel, NL



Sungo Certification Company Limited  
70 Gracechurch Street, London,  
EC3V 0HR, GB

N.B Images contained in this document are for illustration and parts identification purposes only and may not reflect the product outlook.

